



## Continuity of Services

### Safe Return to In-Person Learning

District Name: Maplewood Local Schools  
District Address: 2414 Greenville Rd NE, Cortland OH 44410  
District IRN: 050211

LEAs that receive ARP ESSER funds meet the requirements in section 2001(i) of the ARP Act and the requirements relating to the ARP ESSER funds published in the Federal Register and available at <https://oese.ed.gov/offices/american-rescue-plan/american-rescue-plan-elementary-and-secondary-school-emergency-relief/> (ARP ESSER requirements) to either: (a) within 30 days of receipt of the funds, develop and make publicly available on the LEA's website a plan for the safe return to in-person instruction and continuity of services, or (b) have developed and made publicly available on the LEA's website such a plan that meets statutory requirements before the enactment of the ARP Act.

Required elements of local plans. The federal requirements go on to identify the elements of the most up-to-date Centers for Disease Control and Prevention (CDC) guidance that must be addressed in the plan:

1. Each LEA plan includes, or will be modified to include, the extent to which it has adopted policies and a description of any such policies on each of the following mitigation strategies:
  - Universal and correct wearing of masks;
  - Physical distancing (e.g., including use of cohorts/podding);
  - Handwashing and respiratory etiquette;
  - Cleaning and maintaining healthy facilities, including improving ventilation;
  - Contact tracing in combination with isolation and quarantine, in collaboration with the state, local, territorial or tribal health departments;
  - Diagnostic and screening testing;
  - Efforts to provide vaccinations to educators, other staff and students, if eligible; and
  - Appropriate accommodations for children with disabilities with respect to the health and safety policies.
2. Each LEA plan describes how it will ensure continuity of services, including but not limited to services to address the students' academic needs and students' and staff social, emotional, mental health and other needs, which may include student health and food services.
3. The LEA periodically reviews, no less frequently than every six months for the duration of the ARP ESSER grant period (i.e., through September 30, 2023), and revises its plan as appropriate.
4. The LEA seeks public input and takes such input into account on (1) whether revisions are necessary and, if so, (2) the revisions to the plan.

Federal Reporting. When LEAs submit the application to the Ohio Department of Education for ARP funding, it will include an assurance that the LEA will have a Safe Return to In-Person Instruction and Continuity of Services Plan posted on its website by June 24, 2021. The assurance also requires the LEA to periodically review the plan with its stakeholders.

Public reporting. In addition to the requirement that districts publicly post the continuity of service plans, the Ohio Department of Education will collect the website addresses for those plans and post them to the Ohio Department of Education website.

Review Dates:

\_\_\_\_\_ : December 2021:

\_\_\_\_\_ : June 2022

\_\_\_\_\_ : December 2022

\_\_\_\_\_ : June 2023

*NOTE: To best protect the health of our students, employees, and visitors and to abide by requirements from recommendations from the Ohio Department of Health and the Trumbull County Combined Health District, the Maplewood Local School District may need to amend practices outlined in this plan.*

### Universal Correct Wearing of Masks

2021 – 2023

- ✓ The Maplewood Local School District will follow all recommendations from the CDC, Ohio Department of Health and the Trumbull County Department of Health regarding masks. Signage will be posted on the correct wearing of masks. The Superintendent reserves the right to require masks for all students and staff in the event of increased cases within the Maplewood Local School District.

### Physical Distancing

2021 – 2023

- ✓ Staff, students, and visitors are encouraged to maintain social distancing of six (6) feet to the extent possible.

### Handwashing and Respiratory Etiquette

2021 – 2023

- ✓ Hand sanitizing stations, PPE (Masks, Sani-wipes, disinfectant spray) supplies are available.
- ✓ Water fountains are not available for use-until further notice.
- ✓ Signage is displayed throughout the facility concerning respiratory etiquette.
- ✓ Handwashing will be enforced throughout the day.

### Cleaning and Maintaining Healthy Facilities, including improving ventilation

2021 – 2023

#### CLEANING

- ✓ The custodial staff are trained and utilizes proper cleaning and disinfecting protocols.
- ✓ Approved COVID-19 cleaning and disinfecting products are regularly utilized.

#### VENTILATION

- ✓ HVAC equipment is operating correctly through routine maintenance and filter changes, including fresh air return.

## Contact Tracing, in Combination with Isolation and Quarantine, in Collaboration with State, Local, Territorial or Tribal Health Dept.

2021 – 2023

- ✓ The Trumbull County Combined Health District COVID-19 Protocol. (Attachment #1)
- ✓ COVID-19 positive individuals shall notify their administrator or supervisors immediately.
  - What counts as close contact?
    - Were within six (6) feet of someone who is COVID-19 positive as verified by a proctored COVID-19 test.

## Diagnostic Testing and Screening

2021 – 2023

- ✓ Employees suspected of COVID -19 exposure shall be referred to utilize an off-site testing provider.
- ✓ The Trumbull County Combined Health District COVID-19 Protocol will be followed. (Attachment #1)

## Efforts to Vaccinate Educators

2021 – 2023

- ✓ In collaboration with the Trumbull County Combined Health District and Discount Drug Mart, all employees had access to the TCESC mass vaccination clinic (February/March 2021.)
- ✓ The TCESC encourages unvaccinated staff members to seek a vaccine by attending a Trumbull County Combined Health District Vaccine Clinic.

## Food Service

2021 – 2023

- ✓ The Maplewood Local School District provided all students with free breakfast and lunch throughout the 2020-2021 school year. Signs ups for the 2021- 2022 school year are available at each school office. Meals will served in the cafeteria and utilize social distancing as much as possible.

## Student SEL

2021 – 2023

- ✓ The Maplewood Local School District utilizes various intervention programs, including RTI and the PBIS framework, to support students.
- ✓ Teachers shall monitor student attendance and behaviors
- ✓ The Maplewood Local School district utilizes a partnership with Valley Counseling.
- ✓ Counseling services are available in the district through Valley Counseling.

## Accommodations for Children with Disabilities with Respect to the Health & Safety Policies.

### Instructional needs

2021 – 2023

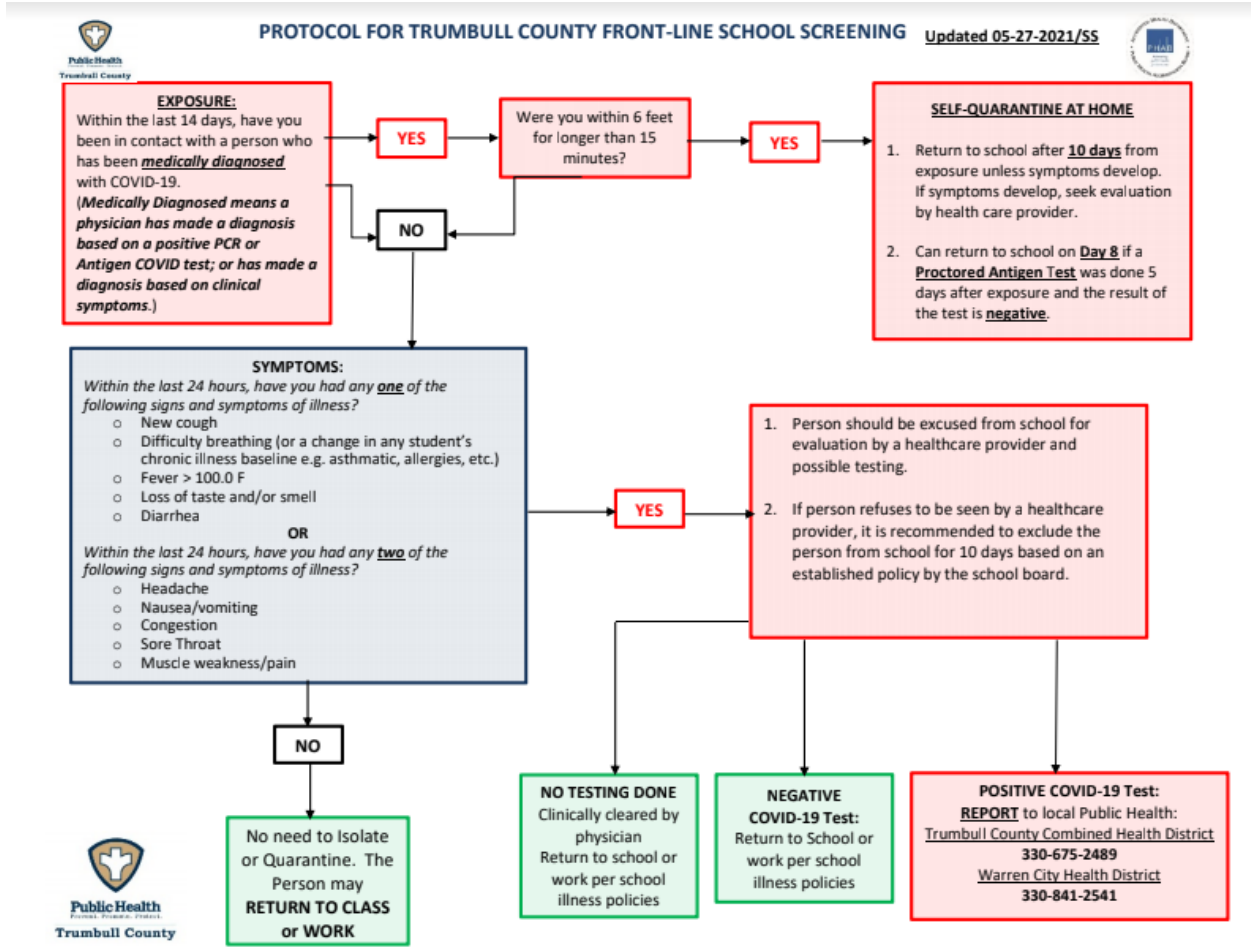
- ✓ The Maplewood Local School District is aware of students with emotional needs and certain medical conditions and will continue to communicate with the parents/guardians to ensure that both academic and social emotional needs are met within their IEP, and if not amend the document accordingly.
- ✓ Maplewood Local Schools have teamed up with Valley Counseling.
  - On-going observations in classrooms and throughout school setting
  - Student questionnaires
  - 1:1 counseling session with students / families
  - Student and family referrals / community resources
- ✓ TBTs will meet regularly and submit monthly reports to the BLT
  - Meeting roles need to be assigned and used
- ✓ The BLT will meet monthly to review TBT reports to engage in data-based decision-making regarding the building-wide reading plan
  - Percent of students who are low risk, some risk, and at risk for future reading difficulties.
  - Percent of students who are responding to reading intervention.
  - Percent of students who remain at low risk from one screening to the next.
  - Percent of students with reduced levels of risk from one screening period to the next
  - RTFI will be conducted annually.
- ✓ How do we ensure at-risk students are taking advantage of the opportunities?
  - Families will be contacted via social media, hard copy, One Call, text, and email.
  - Chromebooks and hotspots will be provided to aide student accessibility to learning / resources.
  - Online options
- ✓ What steps will be taken to remove/overcome barriers that may be associated with the “Gap Filling Approaches”
  - Transportation to tutoring
  - Hybrid model utilized to allow students to participate from home or alternate locations

	<ul style="list-style-type: none"> <li>○ Chromebooks and hotspots will be provided to aid student accessibility to learning / resources.</li> <li>✓ What social and emotional PD will help teachers address wellness needs of students and staff recovering from added pandemic stressors? <ul style="list-style-type: none"> <li>○ PBIS / PAX</li> <li>○ Trauma</li> <li>○ Signs of anxiety / depression</li> <li>○ On-going Safety and Violence training</li> </ul> </li> </ul>
--	---

Plan Availability	
<b>2021 – 2023</b>	<ul style="list-style-type: none"> <li>✓ The plan is posted on the Maplewood Local Schools website homepage: <a href="https://www.maplewood.k12.oh.us">https://www.maplewood.k12.oh.us</a></li> <li>✓ The plan may be orally translated for parents by contacting the Maplewood Superintendent at (330) 637-7506.</li> <li>✓ Upon request, a parent who is an individual with a disability as defined by the ADA may be provided with the plan in an alternative format by contacting the Superintendent at (330) 637-7506.</li> </ul>

Public Input and Review	
<b>2021 – 2023</b>	<ul style="list-style-type: none"> <li>✓ The Maplewood Local School District received parent and staff input using surveys throughout the pandemic regarding educational needs. Additional surveys may be used moving forward.</li> <li>✓ District Leadership team will meet to discuss the plan and revise as needed.</li> </ul>

Attachment #1



The Maplewood Local School District will apply ESSER funding in a variety of methods. Please see the following budgets for the planned use of these dollars.

FUND/SCC	ACCOUNT TITLE	DATE	DESCRIPTION	
5079021 - ESSER	SALARIES	08/17/20	PAYROLL CHARGES	60,767.00
5079021 - ESSER	BENEFITS	08/17/20	PAYROLL CHARGES- FRINGE	9,000.00
5079021 - ESSER	HEALTH AND HYGIENE SUPPLIES	07/23/20	SUPPLIES	50,002.13
5079021 - ESSER	TECHNICAL EQUIP	02/19/21	SECURITY CAMERAS	7,729.26

127,498.39



ESSER II

	SALARIES	FRINGE BENEFITS	PURCHASE SERVICE	SUPPLIES	CAPITAL OUTLAY	TOTAL
<b>INSTRUCTION</b>	<b>125,000.00</b>	<b>24,000.00</b>	<b>27,286.25</b>	<b>12,513.75</b>	<b>3,954.00</b>	<b>192,754.00</b>
ADDTL 3RD GRADE FY22	82,503.00	24,000.00				
TUTORS/SUBS/INTERVENTION	42,497.00					
EDUCERE			27,286.25			
SPECIAL ED CHROMEBOOKS					3,954.00	
EDUCATIONAL SUPPLIES				12,513.75		
<b>SUPPORT SERVICES</b>	<b>88,000.00</b>	<b>13,107.58</b>				<b>101,107.58</b>
CAFETERIA SALARIES	88,000.00	13,107.58				
<b>SAFETY</b>			<b>1,342.95</b>	<b>15,000.00</b>	<b>25,199.47</b>	<b>41,542.42</b>
ALICE TRAINING			1,342.95			
TANKS					25,199.47	
HEALTH & HYGIENE				15,000.00		
<b>FACILITIES</b>					<b>65,000.00</b>	<b>65,000.00</b>
ES BOILER					65,000.00	
<b>TRANSPORTATION</b>	<b>2,500.00</b>				<b>85,000.00</b>	<b>87,500.00</b>
SALARIES FOR SUMMER SCHOOL	2,500.00					
NEW BUS					85,000.00	
	<b>215,500.00</b>	<b>37,107.58</b>	<b>28,629.20</b>	<b>27,513.75</b>	<b>175,199.47</b>	<b>487,904.00</b>

**ESSER III**

	SALARIES	FRINGE BENEFITS	PURCHASE SERVICE	SUPPLIES	CAPITAL OUTLAY	TOTAL
	<b>319,027.00</b>	<b>145,929.35</b>	<b>15,500.00</b>	<b>36,900.00</b>	<b>45,000.00</b>	<b>562,356.35</b>
<b>INSTRUCTION</b>	176,000.00	54,632.00				
ADDT'L 3rd GRADE TEACHER FY23 & FY24	139,527.00	91,297.35				
ADDT'L "K" 3 YRS	3,500.00					
ES SUMMER SCHOOL				16,900.00		
LEXIA ES READING K-8			12,000.00			
STUDY ISLAND FY22, FY23, FY24			3,500.00			
HS SUMMER SCHOOL					25,000.00	
ES LEARNING LAB				20,000.00		
CHROMEBOOKS					20,000.00	
SERVICES	<b>180,000.00</b>	<b>28,800.00</b>	<b>100,000.00</b>	-		<b>308,800.00</b>
<b>SUPPORT SERVICES</b>			100,000.00			
CAFÉ GROUP FY23 & FY24	180,000.00	28,800.00				
CAFÉ STAFF FY23 & FY24			<b>100,000.00</b>			<b>100,000.00</b>
<b>SAFETY</b>			100,000.00			
ES WINDOWS & LENTELS			<b>25,000.00</b>		<b>6,500.00</b>	<b>31,500.00</b>
<b>FACILITIES</b>					6,500.00	
BURNISHERS & VACUUMS			25,000.00			
ES DOOR REPLACEMENT					<b>85,000.00</b>	<b>85,000.00</b>
<b>TRANSPORTATION</b>					85,000.00	
NEW BUS						
	<b>499,027.00</b>	<b>174,729.35</b>	<b>240,500.00</b>	<b>36,900.00</b>	<b>136,500.00</b>	<b>1,087,656.35</b>